



Product Catalogue

Issue 5

Moulded Rubber Products



RSP AUTOMOTIVE & INDUSTRIAL PTY LTD
(Incorporating Rare Spares)

20-22 Truck City Drive, Campbellfield, Vic 3061, Australia

Ph: +61 3 9305 4000 | Fax: +61 3 9305 3520 | Web: www.rsp.net.au | Email: rsp@rsp.net.au

RSP AUTOMOTIVE & INDUSTRIAL – INDUSTRY LEADERS AND ARGUABLY AUSTRALIA'S LARGEST SUPPLIER OF MOULDED RUBBER PRODUCTS AND EXTRUSIONS.

RSP Automotive and Industrial pride ourselves on being one of the most trusted, respected and recognised names in both the Industrial and Automotive industries. We strive to provide our customers with exceptional service, quality and a diversified range of products that you can rely on.

RSP Automotive and Industrial has operated in Australia since 1974. RSP originally started business supplying new and refurbished parts for early model Holdens under the name 'Rare Spares'. Today we are a diversified company that specialises in Automotive Restoration, Industrial Rubber products, Pressed Metal products, Automotive OEM products and are the Australasian distributor of internationally recognised brand Codan hose.

RSP's personalised focus to its customer base includes large and immediately accessible stockholding, spanning over 3,000 square metres, and an extensive infrastructure including central warehousing, industry leading logistics and national distribution ensuring that customer delivery expectations are consistently met.

RSP's emphasis on quality and service is benchmarked against worldwide standards, with the company possessing ISO 9001 Quality Managements System certification by SAI Global.



RSP IS A BRAND YOU CAN TRUST! IF YOU CAN'T FIND IT, CONTACT US TODAY!

RSP has successfully sourced and supplied thousands of unique products to both the Industrial and Automotive sectors, ranging from specialised rubber seals to electrical turn signal switches. Our established global supplier base includes plastic, rubber, metal stamping, cable, electrical components, metal casting and filter manufacturing plants.

Our expert sales, product and development team utilises a tailored RFQ (request for quotation) system which ensures all of our customer requirements are met and that they are handled efficiently and effectively with optimal results. If you require a quote or a product to be developed please contact our dynamic sales team on:

03 9305 4000 or email: sales@rsp.net.au



CATALOGUE

This catalogue represents a range of products that at the time of printing are available and correct, however this may change without notice and RSP reserves the right to alter designs and dimensions without notice. All dimensions are approximate measurements and should be used as a guide only. During the course of time we will add new and exciting ranges which will be included in the next edition of our catalogue. For the most up to date information on our range of products please visit www.rsp.net.au

QUALITY

RSP is the only company to comply with the requirements of FMVSS302 (Federal Motor Vehicle Safety Standard) on some pinchwelds as noted throughout the catalogue. RSP's wheel chocks have also been independently tested to the load factors in the SAE J348 (Society of Automotive Engineers) international standard and meet, and in some cases exceed, the required load ratings in the standard.



Moulded Rubber Products



*Please note: RSP reserves the right to alter designs & dimensions without notice. At the time of printing this catalogue, all products are available, however this may change without notice.



Wheel Chocks	55
Rubber Hoist Pads	56
Crane Pads	57
Heavy Duty Buffers	58
Moulded Docking Rubber	59
Bumper Mounting	59
Corner Safety Pads	60
Pillar Safety Pads	60
Rubber Tie Down Straps	61
Merchandiser – Rubber Tie Down Straps	61
Blanking Grommets	62
Anti-Vibration Cushion Connector Type A, B & Shaped Buffer – Type C	63
Rubber Bushes	64
Anti-Rattle Bumpers & Grommets	65

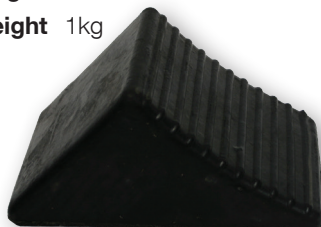
Moulded Rubber Products

WHEEL CHOCKS

The range of wheel chock products shown in this catalogue have been independently tested to the load factors shown in the SAE J348 (Society Of Automotive Engineers) international standard. All wheel chocks were found to meet and in some cases exceeded the required load ratings in the Standard.

SMALL:

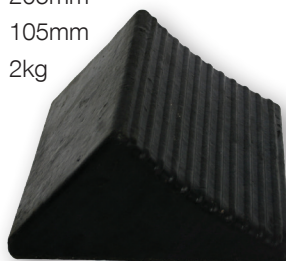
Length 205mm
Width 130mm
Height 100mm
Weight 1kg



WC1467A

MEDIUM:

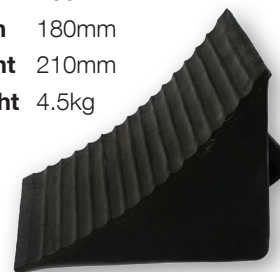
Length 205mm
Width 205mm
Height 105mm
Weight 2kg



WC1468A

LARGE HALF MOON:

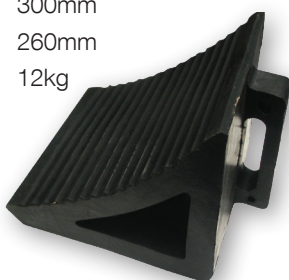
Length 260mm
Width 180mm
Height 210mm
Weight 4.5kg



WC2556A

JUMBO HALF MOON:

Length 300mm
Width 300mm
Height 260mm
Weight 12kg



WC3783

PYRAMID:

Length 250mm
Width 200mm
Height 160mm
Weight 4kg



WC1086

JUMBO PYRAMID:

Length 380mm
Width 215mm
Height 155mm
Weight 9.5kg



#WC1087

WHEEL CHOCK WITH HANDLE:

Length 255mm
Width 125mm
Height 150mm
Weight 2.5kg



WC1088

WHEEL CHOCK WITH HANDLE:

Length 250mm
Width 90mm
Height 150mm
Weight 2.5kg



#WC1089

TETHERED WHEEL CHOCK:

Length 205mm
Width 105mm
Height 90mm
Weight 3kg



Rope length 900mm

WC24483

IDEAL FOR:

- Truck
- Bus
- Aviation
- Variety of Industries

FEATURES:

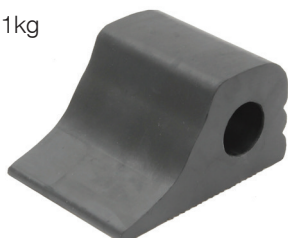
- Manufactured from an extremely durable and hardwearing EPDM blended rubber compound.

WHEEL CHOCKS

The range of wheel chock products shown in this catalogue have been independently tested to the load factors shown in the SAE J348 (Society Of Automotive Engineers) international standard. All wheel chocks were found to meet and in some cases exceeded the required load ratings in the Standard.

SMALL:

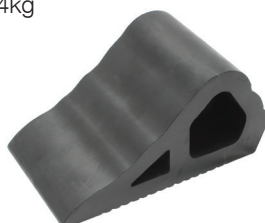
Length 155mm
Width 100mm
Height 75mm
Weight 1kg



WC1155

MEDIUM:

Length 275mm
Width 160mm
Height 150mm
Weight 4kg



WC1275

IDEAL FOR:

- Truck
- Bus
- Aviation
- Variety of Industries

FEATURES:

- Manufactured from an extremely durable and hardwearing EPDM blended rubber compound.

RUBBER HOIST PADS



RUBBER HOIST PAD TO SUIT
BISHAMON RKN40NW,
NSA30, NSP30 HOISTS WITH METAL
REINFORCED MOUNTING PLATE
NO SCREWS INCLUDED

RHPB001



RUBBER HOIST PAD TO SUIT
BISHAMON SPW3000,
SPW2500 HOISTS WITH METAL
REINFORCED MOUNTING PLATE
NO SCREWS INCLUDED

RHPB004



RUBBER HOIST PAD TO SUIT
MOLNAR MF17505-85A-3T,
95A-3T & 4T HOISTS

RHPM005



RUBBER HOIST PAD TO
SUIT 2 & 3 HOLE POWERREX
2900F 2900FR HOISTS
SCREWS NOT INCLUDED

RHPP003



RUBBER HOIST PAD TO SUIT
TECALEMIT V15100 & 3000
SERIES HOISTS

RHPT002

VEHICLE HOIST REPLACEMENT PADS MADE FROM HIGH GRADE DURABLE RUBBER

- Molnar
- Tecalemit
- Bishamon
- Powerrex

Moulded Rubber Products

CRANE PADS

Compressed Distance (mm)	Compressive Load
5	22,920 kgf
10	74,392 kgf
15	127,842 kgf
20	182,225 kgf
21.5	217,522 kgf

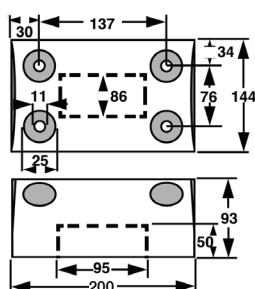


Part No.	Height (mm)	Width (mm)	Thickness (mm)
#92139	355	355	50
#92140	460	460	50

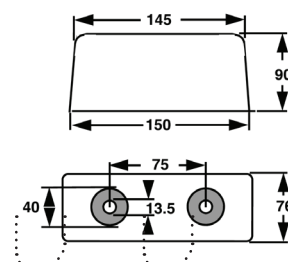
FEATURES:

- Excellent support for crane and excavator feet, or other equipment.
- Made from superior rubber compound, the Rubber Crane Pad leaves no mark on surfaces and landscape damage is reduced.
- Provides a safer and stable footing especially in wet ground conditions.
- Rubber materials provide heavy-duty uses while being resilient and rust free.
- Surface has anti-slip design to enhance safety grip.
- Rubber Crane Pad has a handle on one-side to enhance ease of use when shifting locations.

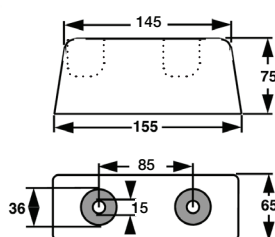
HEAVY DUTY BUFFERS



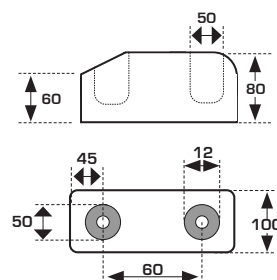
B45001



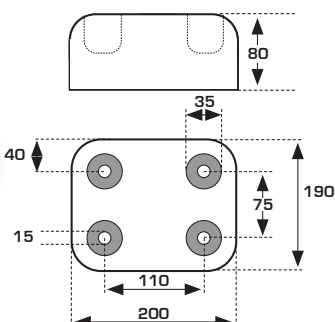
B5500



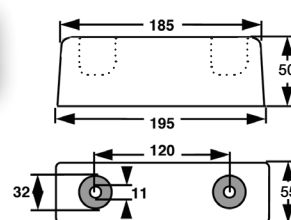
B5540



B5620



B5640



B57601

FEATURES:

- Moulded in mounting holes for easy fixing
- Manufactured from an extremely durable and hardwearing EPDM blended rubber compound

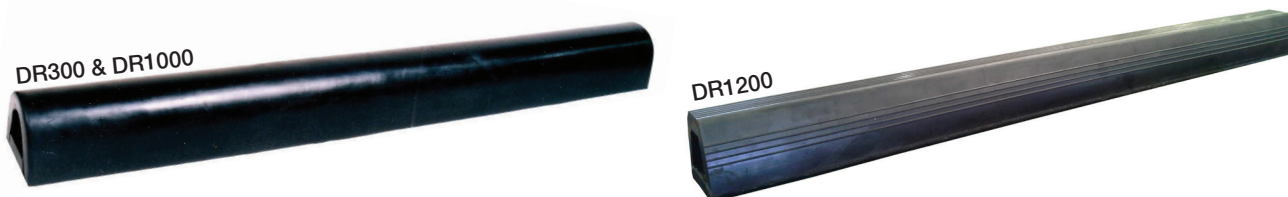
Hardness = 75 DURO

IDEAL FOR:

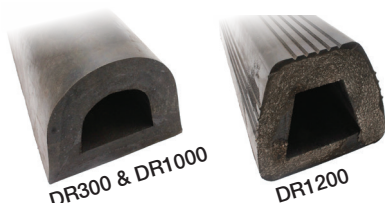
- Medium Weight truck bumpers.
- Steel Fire Doors
- Any industrial application where noncyclic buffing is experienced.

Moulded Rubber Products

BUMPER MOUNTING



PART No.	Height (mm)	Width (mm)	Length (mm)	Wall Thickness (mm)
DR300	110	90	300	20
DR1000	110	90	1000	20
DR1200	94	104	1200	20



Protect property and vehicles from damage by using these heavy duty docking buffer. Suitable for loading bays and jetties etc. They are manufactured from an extremely durable and hardwearing EPDM blended rubber compound.

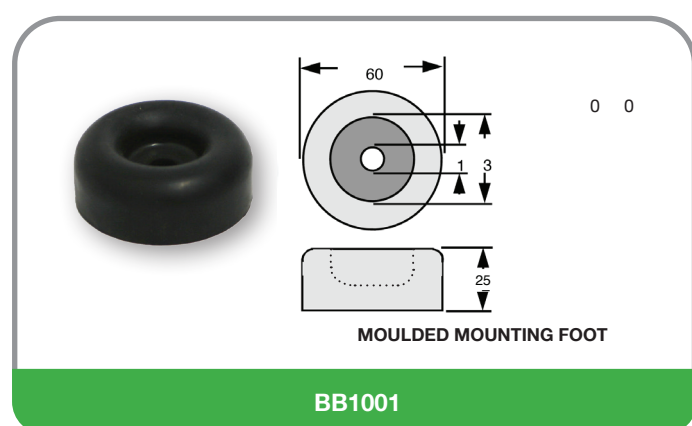
FEATURES:

- Can be easily drilled for mounting onsite or cut to length.
- Can be fixed directly to the bumper bar of large trucks.
- Manufactured from an extremely durable and hardwearing EPDM blended natural rubber compound.

IDEAL FOR:

- Loading Bays
- Jetties
- Wharves
- Trucks
- Truck Trailers

MOULDED DOCKING RUBBER

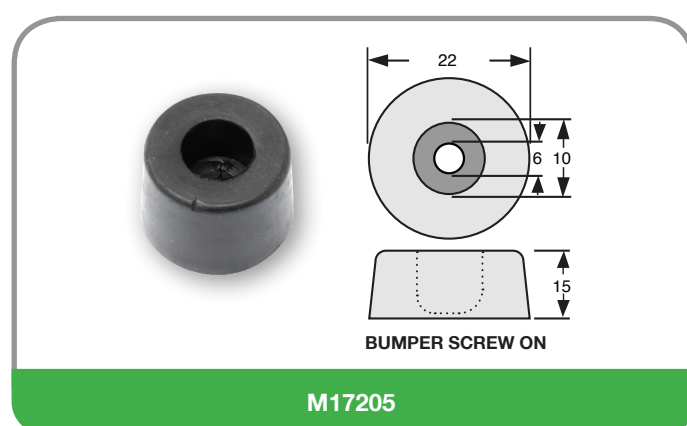


FEATURES:

- Solid moulded rubber
- Durable
- Reduces Vibration and Noise
- Hard wearing EPDM rubber

IDEAL FOR:

- Machine mounting legs
- Protecting doors, walls etc
- Truck bumper bars and industrial applications



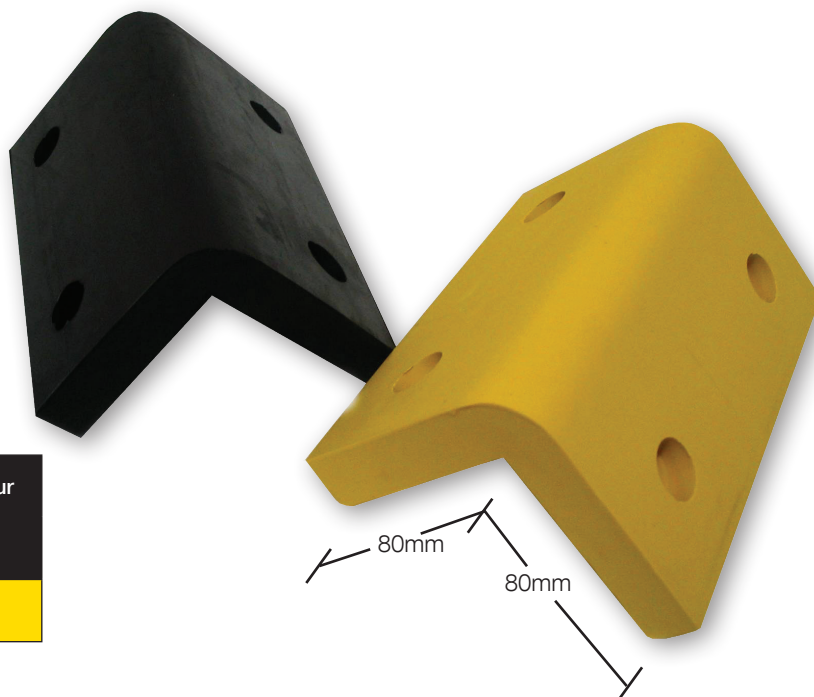
CORNER SAFETY PADS

These high quality, natural rubber corner guards are ideal for use in all manner of car parks, hospitals, schools, shopping centers and factory complexes. They are suitable for various high use areas.

IDEAL FOR:

Providing protection from damage to buildings and vehicles in car parks, loading bays, and storage areas.

PART No.	Material	Length (mm)	Colour
92141	Solid Natural Rubber	165	
92142	Solid Natural Rubber	165	



PILLAR SAFETY PADS

These high quality, natural rubber corner guards are ideal for use in all manner of car parks, hospitals, schools, shopping centers and factory complexes. They are suitable for various high use areas.

IDEAL FOR:

Providing protection from damage to buildings and vehicles in car parks, loading bays, and storage areas.

PART No.	Material	Length (mm)	Colour
92206	Solid Natural Rubber	1000	
92207	Solid Natural Rubber	1000	



Moulded Rubber Products

RUBBER TIE DOWN STRAPS



**QUICK GRIP
HOOKS**

Produced from natural rubber not UV stable

PART No.	Length (mm)	Recommended MAX Stretch Length (mm)	Pack Quantity
74-010-10	254	330	10
74-0150-10	381	481	10
74-021-10	533	750	10
74-031-10	787	1000	10

MERCHANDISER - RUBBER TIE DOWN STRAPS

This attractive wall mounted tie down merchandiser saves space, is easily restocked, and can actually help you to generate profits.

The merchandiser measures 380mm x 120mm and is mounted using keyhole slots.

WARNING:

- Do not extend rubber tie down strips beyond their recommended maximum stretch limits.



MERCHANDISERS

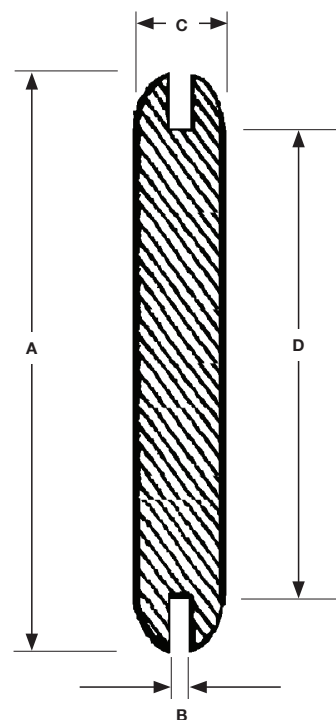
PART No.	Description
74-003	20 of each of the 4 sizes
74-004	30 of each of the 4 sizes

All dimensions in millimetres

#Non Stock Line - Minimum order quantities apply

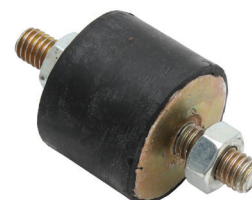
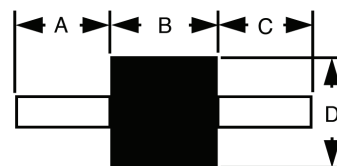
BLANKING GROMMETS

PART No.	A (mm)	B (mm)	C (mm)	D (mm)
M0034-001	12.7	1.2	7.2	9.5
M0039-002	20.6	1.6	7.2	17.5
M0058-105	57.1	1.2	9.5	44.5
M0115-001	17.5	1.6	6.4	12.7
M0128-001	19.0	1.6	6.4	14.3
M0129-001	38.1	1.6	8.0	31.8
M0159-001	11.0	1.6	4.8	8.0
M0160-001	25.4	1.6	6.4	19.0
M0161-001	20.6	1.6	6.4	16.0
M0171-001	16.0	1.6	6.4	11.0
M0194-001	31.8	1.6	0.8	25.4
M0228-001	25.4	0.8	8.0	14.3
M0240-001	28.6	1.6	6.4	22.3
M0251-001	58.0	1.6	7.2	36.5
M0261-001	33.3	1.6	8.0	27.0
M0323-001	59.0	1.5	7.5	50.5
M0338-001	53.0	2.4	8.7	35.0
U00014	35.7	3.8	10.3	30.3
U00017	30.3	2.0	8.4	12.8
U00082	51.9	3.2	11.6	43.7
U00112	21	3.6	11.5	16.7
U00113	35.9	3.4	13.3	30.7



ANTI-VIBRATION CUSHION CONNECTOR – TYPE A

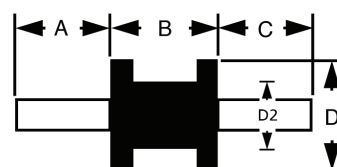
PART No.	DURO	A (mm)	B (mm)	C (mm)	D (mm)	BOLT
CC1002-40-516	40	18	17	18	25	5/16 UNF
GSP6002	65	13	20.5	13	25	6 x 1.0
GSP6004	65	22	30.5	22	40	8 x 1.25
GSP6005	65	27	45.7	27	50	10 x 1.25



Supplied with Nuts

ANTI-VIBRATION CUSHION CONNECTOR – TYPE B

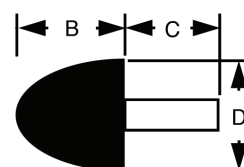
PART No.	DURO	A (mm)	B (mm)	C (mm)	D (mm)	D2 (mm)	BOLT
GSP6001	65	12	41	12	20	11	6 x 1.0
GSP6003	65	22	24.5	22	30	24	8 x 1.25
GSP6006	65	27	36	27	56	45	10 x 1.25



Supplied with Nuts

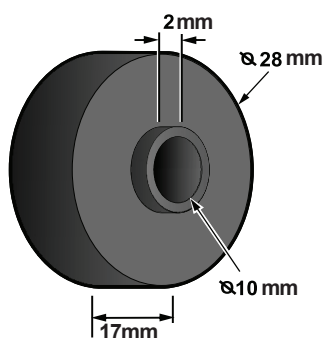
SHAPED BUFFER – TYPE C

PART No.	DURO	B (mm)	C (mm)	D (mm)	BOLT
GSP6007	65	31	22	40	8 x 1.25
GSP6008	65	61	27	50	10x 1.25

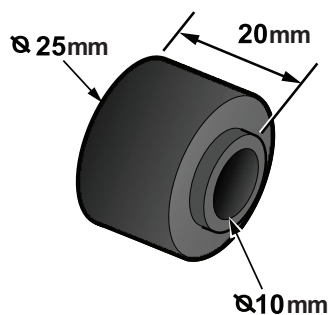


Supplied with Nuts

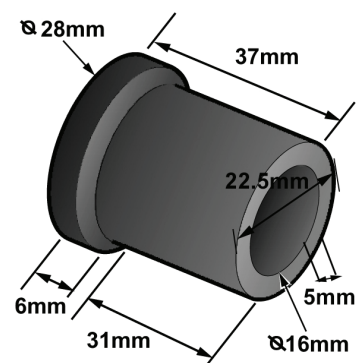
RUBBER BUSHES



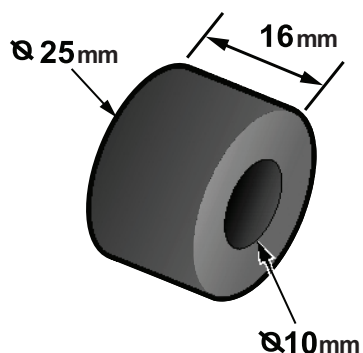
S4002



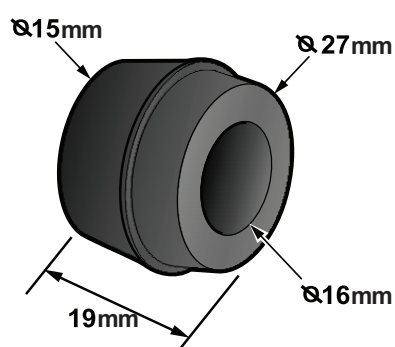
S4006



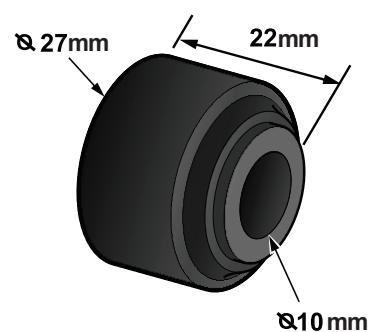
S4013



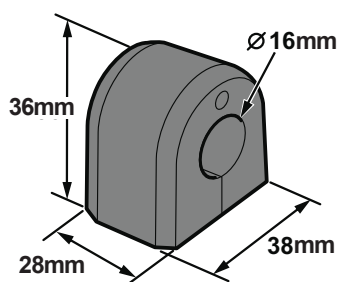
S4021



S4025



S4026



U00077

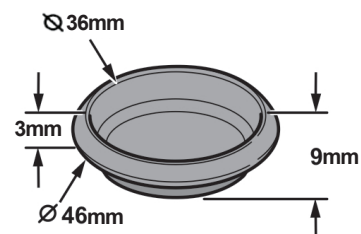
ANTI-RATTLE BUMPERS & GROMMETS



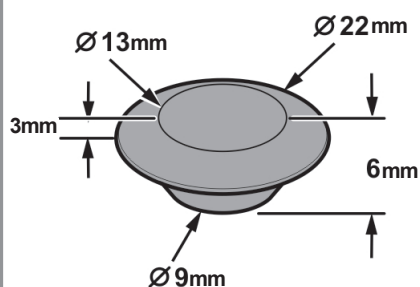
3278G



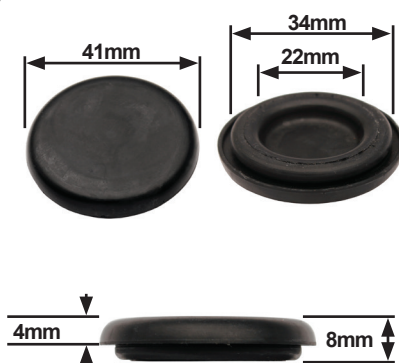
G1019A



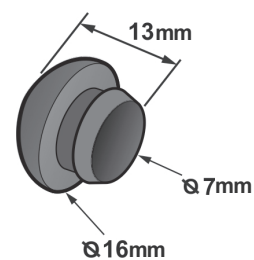
GR1001



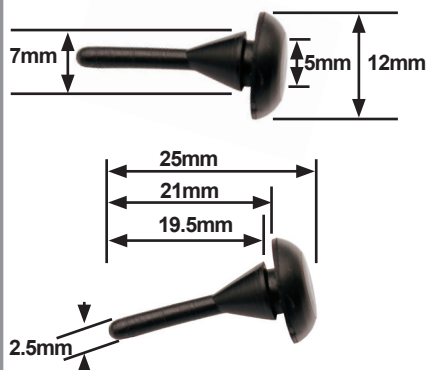
GR1004



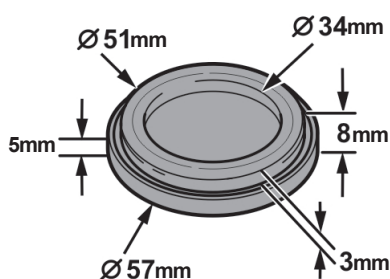
GR1006



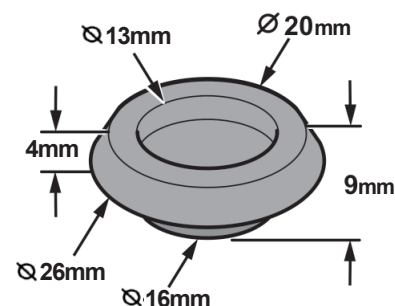
GR1007



GR1008

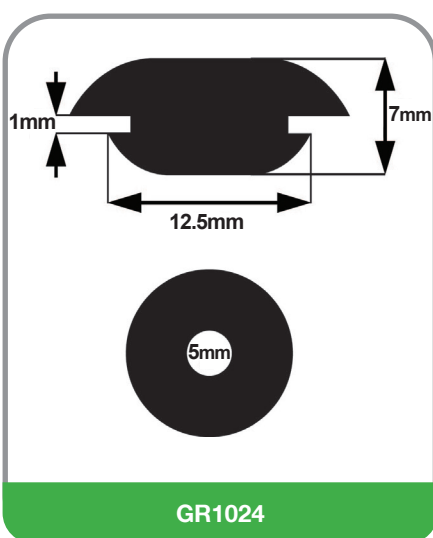
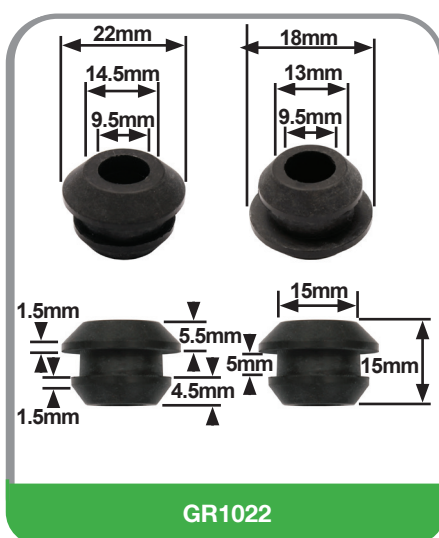
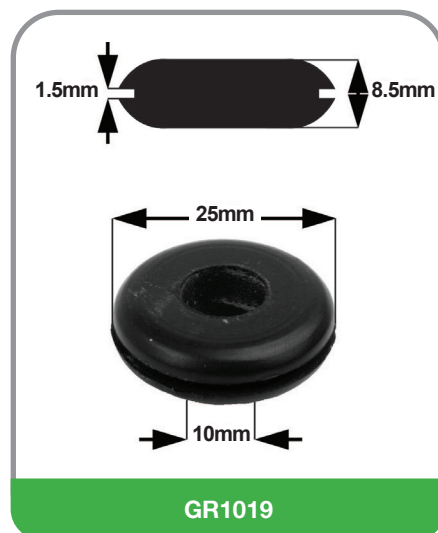
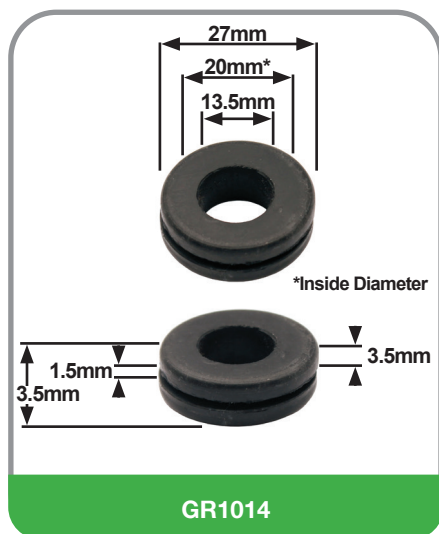


GR1011



GR1013

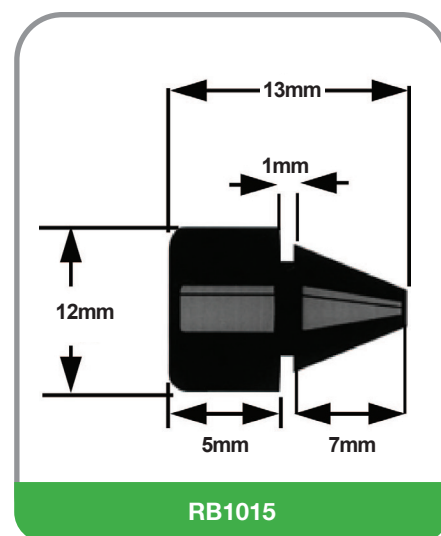
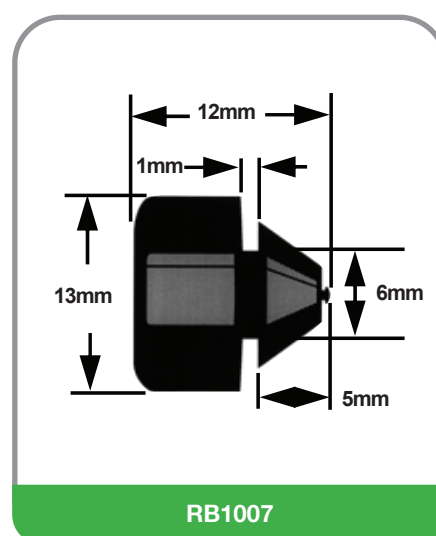
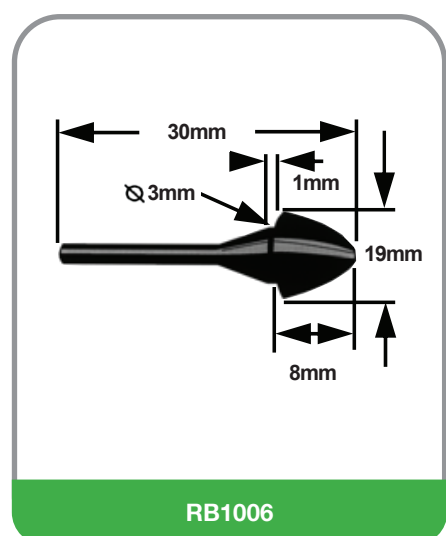
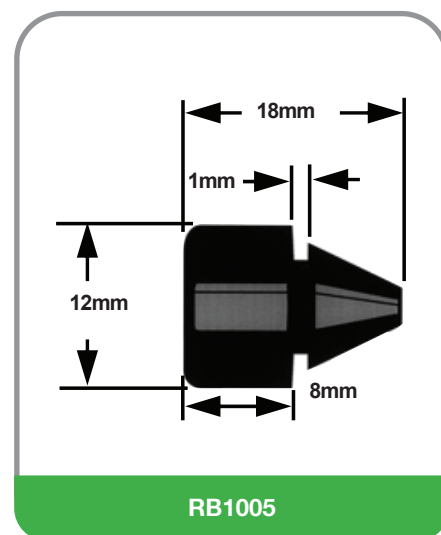
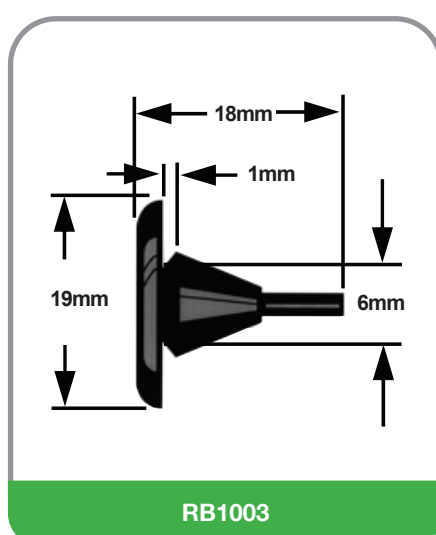
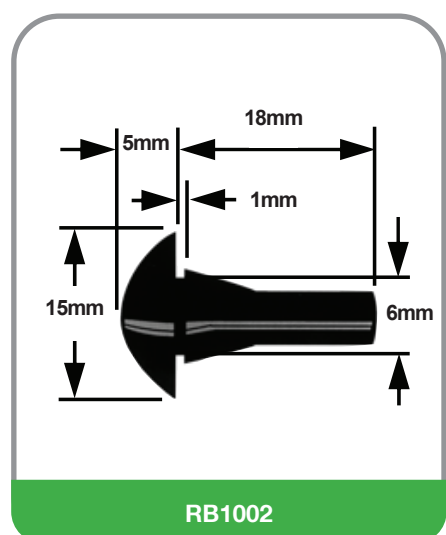
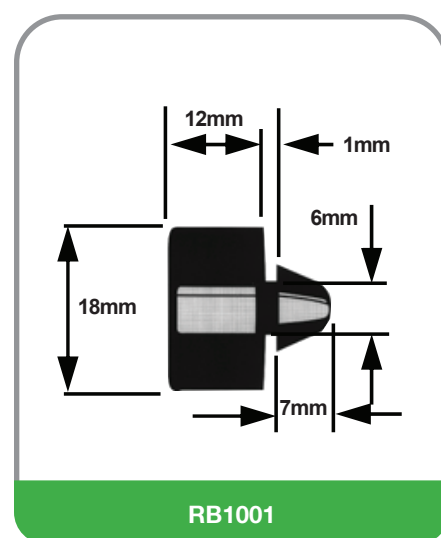
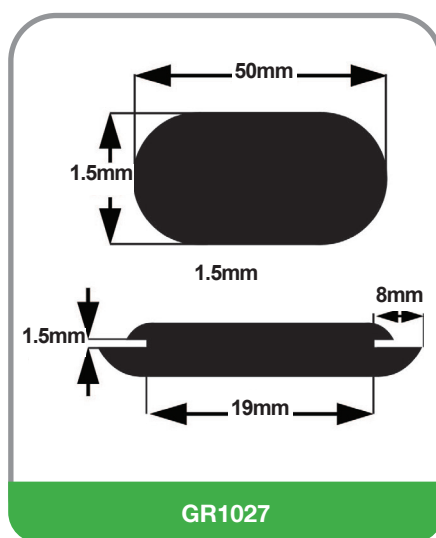
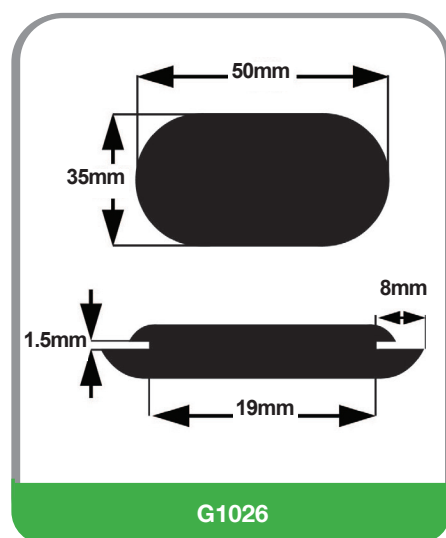
ANTI-RATTLE BUMPERS & GROMMETS



All dimensions in millimetres

#Non Stock Line - Minimum order quantities apply

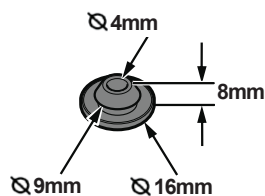
ANTI-RATTLE BUMPERS & GROMMETS



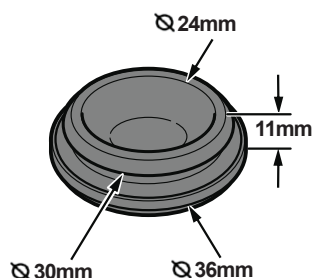
All dimensions in millimetres

#Non Stock Line - Minimum order quantities apply

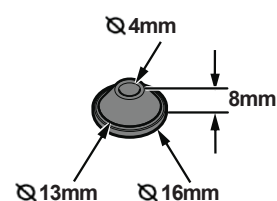
ANTI-RATTLE BUMPERS & GROMMETS



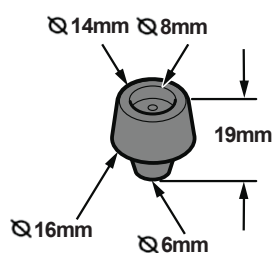
U00005



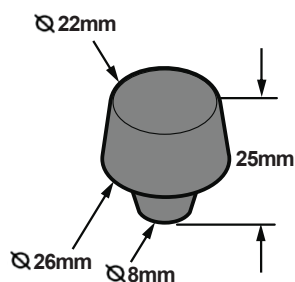
U00014



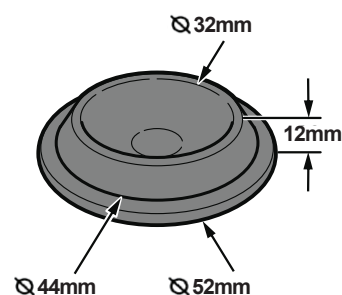
U00017



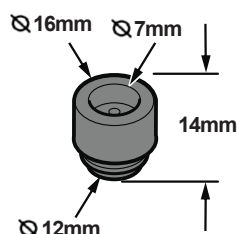
U00066



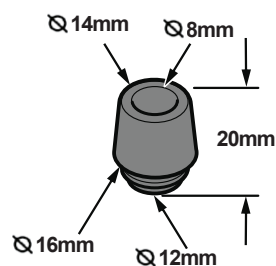
U00070



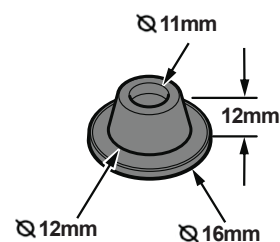
U00082



U00103

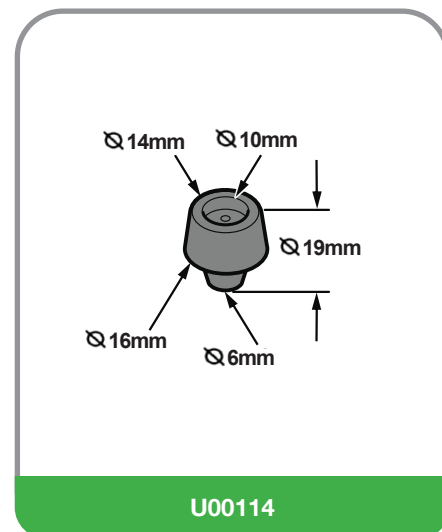
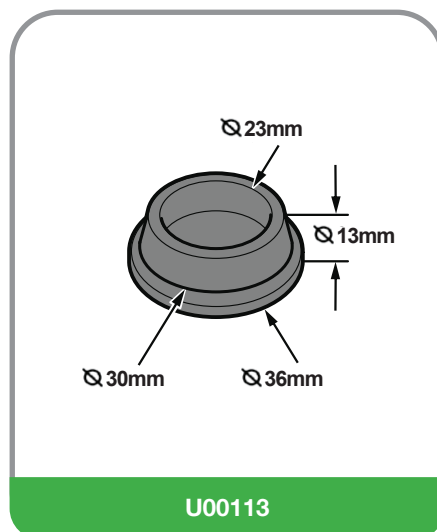
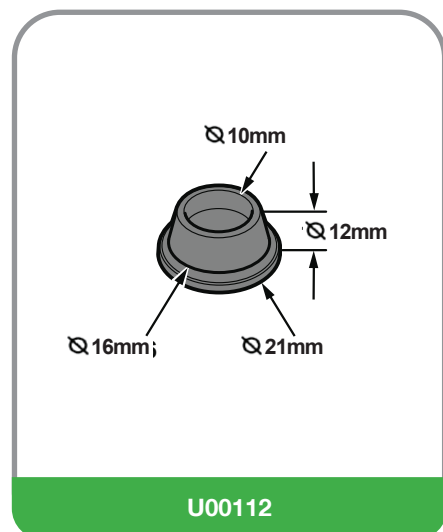


U00104



U00111

ANTI-RATTLE BUMPERS & GROMMETS



Notes



RSP AUTOMOTIVE & INDUSTRIAL PTY LTD
(Incorporating Rare Spares)

20-22 Truck City Drive, Campbellfield, Vic 3061, Australia

Ph: +61 3 9305 4000
Fax: +61 3 9305 3520
Web: www.rsp.net.au
Email: rsp@rsp.net.au